



TECHNICAL CERTIFICATE

The universal heating and cooking furnace for camping saunas and winter tents



Description, purpose

INTENT sauna furnace is a universal furnace that can be used to heat tents and prepare meals, as well as for bath procedures in camping saunas. Stones for the saunas can be put on the hob. Designed for use at ambient temperatures from -40° to $+40^{\circ}$ C.

INTENT MINI is a compact and universal furnace with characteristics similar to the INTENT furnace.

Specifications

Parameters	INTENT	INTENT MINI
Material	AISI 430 steel	AISI 430 steel
Thickness of steel, mm	0,7 - 0,8	0,7 - 0,8
Length mm	600	640
Height mm	570	525
Height without legs, mm	425	380
Width when folded, mm	235	210
Width in the unfolded state, mm	285	265
Diameter of the chimney, mm	90	90
Depth of the firebox, mm	460	395
Volume of firebox, liters	33	25
Chimney segment length, mm	380	380
Weight, kg	17,2	15

Completeness of the product

1. Stove - 1 pc.
2. Chimney segments - 6 pcs.
3. Cover - 1 pc.
4. Leg - 4 pcs.

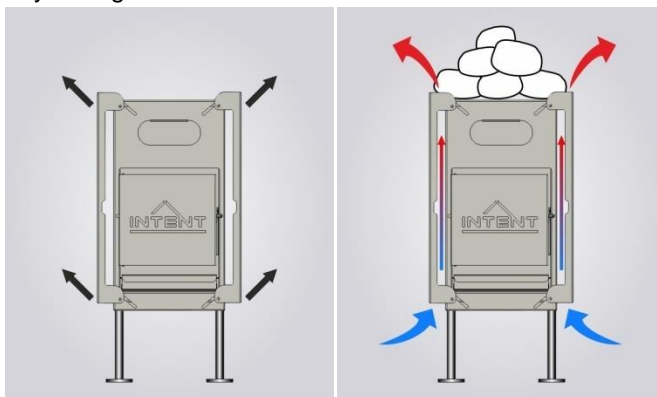
Functional equipment

The furnace is completed and ready for use. It has a sufficient number of chimney segments for installation in a camping sauna, tent or garage up to 2 meters high. This model is equipped with a built-in spark arrestor.

Assembly procedure

The furnace should be assembled in the following order:

1. Install the legs and adjust their height. Attain a stable position of the stove on the surface.
2. Install the chimney segments, interconnecting the detachable connection, make sure that the segments are entered and secured tight. Do not allow backlash to appear.
3. Bring the segments through the cutting of the chimney in the tent (garage) do not allow the pipes and wall material to come into contact.
4. Slide the side reflective screens from the transport position to the working position by gently sliding the side-mounted handles.



Precautionary measures

- Carefully secure the tent with the stove installed on the ground to avoid tipping.
- Do not touch the furnace and the chimney. It can lead to burns
- Do not allow drunk and children to use the furnace.
- Do not use gas or flammable substances to light the stove.
- Do not use coal as fuel.
- Control the position of the furnace on the ground.

Operating rules

The product can be used in temperature from -40 to +40C. When installing a mounted tank or using the product for a long time, soot accumulation is possible. Do not forget to clean the chimney once a day.

Remember that the spark arrester is designed for using wood and charcoal. Do not use pine needles and other thin, lightweight materials such as paper and cardboard.

Check carefully the installation of the furnace in a tent and other mobile structures; it is not permissible to install a furnace with a loosely connected chimney or on an unstable surface.

On the stove there is a cooking panel, it can be used for heating and cooking. When the stove is used as a sauna, you can put 20-25 kg of stones on its surface. After the end of the firebox, make sure that the furnace and chimney are cold and there is no risk of burns. The end of usage should be made in the following order:

1. Make sure that the burning process has stopped and that the furnace and chimney are cold.
2. Drain the water from the mounted tank or steam generator if it was installed.
3. Disassemble the chimney, clean the segments from the accumulated soot.
4. Unscrew the legs.
5. Place the chimney segments and legs inside the firebox.
6. Pack in transport case.

Storage and transportation

The furnace should be stored in a dry pure form, at a temperature from -40 to +40C

Warranty Card

Technical control department date « ____ » _____ 20 .

Full name: _____

Date of sale: « ____ » _____ 20 .

Buyer's signature: _____ / _____

Manufactured by order: New Solution LLC, TIN 6658182671, CRR
665801001

620043, Cherklasskaya str. 9, Sverdlovsk Region, Ekaterinburg, Russia
+7 (343) 386-19-75

www.morzh.eu